

MAKEUP AIR UNIT SCHEDULE																					
SYMBOL	MODEL	COOLING: 3 STAGE DX COOLING			HEATING: 15:1 HIGH TURNDOWN				SUPPLY FAN			RETURN FAN			SUPPLY PER FILTER	ELECTRICITY			MISCELLANEOUS		REMARKS
		TOTAL CAPACITY / SENSIBLE MBH	EDB / EWB °F	WATER REMOVAL LBS / HR	GAS FURNACE MBH IN / OUTPUT	TEMP RISE °F	EFFICIENCY %	GAS PRESSURE IN W.C	AIR FLOW CFM	ESP / TSP °WC	VAV	AIR FLOW CFM	ESP / TSP °WC	VAV	TYPE	V/PHZ	MOCp	AMPS (MCA)	APPROX. WEIGHT (LBS)	16" CURB WEIGHT (LBS)	
MUA - 1	FWE63/DJS40/O/HRP/MV	83 / 47	81.4 / 70.4	31.7	275 / 223	76	81	7	2700	1 / 3.76	Y	2900	1 / 2.49	Y	MERV 8	208 / 3 / 60	70	62.1	7600	500	ALL DATA TO BE CONFIRMED AT TIME OF SHOP DRAWINGS. UNIT CONSTRUCTED FROM 18 GA PAINTED SATIN COAT GALVANIZED CASING C/W 1" 1.5 LB INSULATION AND SOLID LINER THROUGHOUT AIR TUNNEL. UNIT TO INCLUDE PARALLEL BLADE DAMPERS FOR INLET AND EXHAUST.
MUA - 2	FWE63/DJS40/O/HRP/MV	88 / 53	81.4 / 70.5	31.2	300 / 243	75	81	7	3000	1 / 3.83	Y	3200	1 / 2.55	Y	MERV 8	208 / 3 / 60	70	62.1	7600	500	ALL DATA TO BE CONFIRMED AT TIME OF SHOP DRAWINGS. UNIT CONSTRUCTED FROM 18 GA PAINTED SATIN COAT GALVANIZED CASING C/W 1" 1.5 LB INSULATION AND SOLID LINER THROUGHOUT AIR TUNNEL. UNIT TO INCLUDE PARALLEL BLADE DAMPERS FOR INLET AND EXHAUST.

MAKE UP AIR SCHEDULE																			
TAG	LOCATION	MANUFACTURER	QTY.	UNIT MODEL #	BLOWER	HOUSING	DESIGN CFM	ESP	RPM	MOTOR ENCL	HP	BHP	PHASE	VOLT	FLA	MCA	MOCP	WEIGHT (LBS)	REMARKS
MUA-3	AS SHOWN	AQUAMATIC	1	HE20/O	15MF-1-MOD	A1-D.500	1900	0.5	1247	ODP, PREMIUM	1.5	0.87	3	208	4.4	7.6A	15A	1000	THIS MUA IS DEDICATED TO THE KITCHEN EXHAUST. MUA SHALL BE INTERLOCKED WITH EF-3.

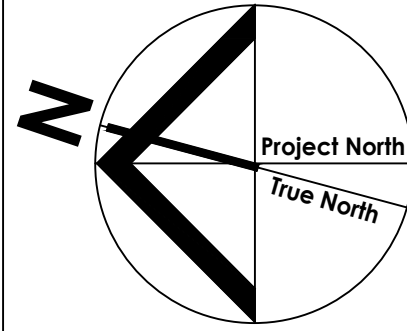
SYMBOL	QUANTITY	SERVICE	LOCATION	MANUFACTURER	MODEL	TYPE	FLUID TYPE	TOTAL CAPACITY (BTU/H)		CORRECTED CAPACITY (BTU/H)		CORRECTED POWER INPUT (KW)		FAN		OUTDOOR TEMPERATURE (°F)			REFRIGERANT	PIPING CONNECTION (INCH)			POWER SUPPLY			MCA (A)	MOP (A)	SOUND POWER	REMARKS
								TOTAL COOLING	TOTAL HEATING	TOTAL COOLING	TOTAL HEATING	COOLING	HEATING	AIR FLOW	QUANTITY	COOLING DBT	COOLING WBT	HEATING DBT		LIQUID	LP GAS	HP GAS	VOLTS	PHASE	HZ				
CU-1	1	HEATING AND COOLING	ROOF	LG	ARUM096CTE5	MULTI V 5 HR(575V)	R-410A	96,000	108000	86,902	88,712	3.2	9.2	11.0	2	87.1	73.9	-4.0	R410A	3/8	7/8	3/4	575V	3Ph	60Hz	16	26	78	APPROVED EQUIVALENT (I.G. MITSUBUSHI, HITACHI)
CU-2	1	HEATING AND COOLING	ROOF	LG	ARUM192CTE5	MULTI V 5 HR(575V)	R-410A	192,000	216000	171010	177323	9.8	21.9	11.0	2	87.1	73.9	-4.0	R410A	5/8	1-1/8	1-1/8	575V	3Ph	60Hz	36	51	87	APPROVED EQUIVALENT (I.G. MITSUBUSHI, HITACHI)
CU-3	1	HEATING AND COOLING	ROOF	LG	ARUM072CTE5	MULTI V 5 HR(575V)	R-410A	72,000	81,000	66291	66509	2.3	7.0	11.0	2	87.1	73.9	-4.0	R410A	3/8	3/4	5/8	575V	3Ph	60Hz	15	23	77	APPROVED EQUIVALENT (I.G. MITSUBUSHI, HITACHI)

MULTI, SINGLE CAC OUTDOOR UNIT SCHEDULE																						
SYMBOL	MODEL	QUANTITY	MODEL	TYPE	TOTAL CAPACITY(BTU/H)		CORRECTED CAPACITY(BTU/H)		RATED POWER INPUT (KW)		CORRECTED POWER INPUT(KW)		PIPING		OUTDOOR TEMPERATURE(°F)			REFRIGERANT	POWER SUPPLY	"SOUND PRESSURE LEVEL (DB(A))"	WEIGHT (LBS)	REMARKS
					COOLING	HEATING	COOLING	HEATING	COOLING	HEATING	COOLING	HEATING	LIQUID	GAS	COOLING DBT	COOLING WBT	HEATING DBT					
CU-4	INDOOR WALL MTD MINI SPLIT AC UNIT	1	KUSAB091A	SINGLE ZONE HIGH WALL	0.00	0.00	9000.00	10900.00	0.60	0.71	0.00	0.00	1/4	3/8	87.1	73.9	-4.0	R32	1/208-230/60	47/51	68.8	--
CU-5	INDOOR WALL MTD MINI SPLIT AC UNIT	1	KUSAP361A	SINGLE ZONE HIGH WALL	0.00	0.00	33000.00	35200.00	3.30	2.93	0.00	0.00	3/8	5/8	87.1	73.9	-4.0	R32	1/208-230/60	55/58	147.9	--

MULTI, SINGLE CAC INDOOR UNIT SCHEDULE																		
SYMBOL	MODEL	LOCATION	MODEL	TYPE	NOMINAL CAPACITY(BTU/H)		CORRECTED CAPACITY(BTU/H)		ROOM DESIGN TEMP (RETURN AIR TEMP.)(°F)			AIR FLOW RATE(CFM)	PIPING		POWER SUPPLY	WEIGHT (LBS)	PRODUCT WEIGHT POUNDS	REMARKS
					COOLING	HEATING	COOLING	SENSIBLE	COOLING DBT	COOLING WBT	HEATING DBT		LIQUID	GAS				
AC-1	INDOOR WALL MTD MINI SPLIT AC UNIT	ELEVATOR / COMM. ROOMS	KNUAB091A	ARTCOOL Mirror	9,000	9,000	8770.13	7075.18	75.1	63.8	70.0	4 / 4 / 4	1/4	3/8	1/208-230/60	19.73	90	--
AC-2	INDOOR WALL MTD MINI SPLIT AC UNIT	ELECTRICAL ROOM	KNSAP361A	WALL MOUNTED	36,000	36,000	32125.15	24281.35	75.1	63.8	70.0	4 / 4 / 4	3/8	5/8	1/208-230/60	40.8	118.6	--

FAN COIL SCHEDULE																		
SYMBOL	LOCATION	MODEL & ZONE	QTY.	MANUFACTURE	TOTAL HEATING CAPACITY (BTU/Hr)	HEATING CAPACITY (BTU/Hr)	REFRIGERANT PIPING			AIR FLOW RANGE (CFM)	FAN		ELECTRICITY				WEIGHT (LBS)	REMARKS
							REFRIGERANT TYPE	LINE LIQUID	CONDENSATE PUMP DRAIN		MIN ESP (IN WG)	MAX ESP (IN WG)	RATED AMP (A)	MAX POWER INPUT (W)	L/MH POWER INPUT	POWER SUPPLY (V/HZ/PH)		
FCU - A - 7	BUILDING - A AS SHOWN	ARNU073M2A4 #ZONE 7	1	LG	7,500	8,500	R410A	1/4	1 PLAIN	283/247/212	0.16	0.71	2.3	430	21/29/38	208-230/60/1	82.9	COMPLETE WITH 2-WAY VALVE THAT IS CONNECTED TO CENTRAL CONTROLLER
FCU - A - 8	BUILDING - A AS SHOWN	ARNU073M2A4 #ZONE 8	1	LG	7,500	8,500	R410A	1/4	1 PLAIN	283/247/212	0.16	0.71	2.3	430	21/29/38	208-230/60/1	82.9	COMPLETE WITH 2-WAY VALVE THAT IS CONNECTED TO CENTRAL CONTROLLER
FCU - A - 10	BUILDING - A AS SHOWN	ARNU093M2A4 #ZONE 10	1	LG	9,600	10,900	R410A	1/4	1 PLAIN	353/318/283	0.16	0.71	2.3	430	21/29/38	208-230/60/1	82.9	COMPLETE WITH 2-WAY VALVE THAT IS CONNECTED TO CENTRAL CONTROLLER
FCU - A - 11	BUILDING - A AS SHOWN	ARNU123M2A4 #ZONE 11	1	LG	12,300	13,600	R410A	1/4	1 PLAIN	494/424/353	0.16	0.71	2.3	430	25/34/43	208-230/60/1	82.9	COMPLETE WITH 2-WAY VALVE THAT IS CONNECTED TO CENTRAL CONTROLLER
FCU - A - 12	BUILDING - A AS SHOWN	ARNU183M2A4 #ZONE 12	1	LG	19,100	21,500	R410A	1/4	1 PLAIN	635/530/424	0.16	0.71	2.3	430	34/43/67	208-230/60/1	82.9	COMPLETE WITH 2-WAY VALVE THAT IS CONNECTED TO CENTRAL CONTROLLER
FCU - A - 13	BUILDING - A AS SHOWN	ARNU093M2A4 #ZONE 13	1	LG	9,600	10,900	R410A	1/4	1 PLAIN	353/318/283	0.16	0.71	2.3	430	21/29/38	208-230/60/1	82.9	COMPLETE WITH 2-WAY VALVE THAT IS CONNECTED TO CENTRAL CONTROLLER
CA-1	BUILDING A AS SHOWN	ARNU183TA44	1	LG	19,100	19,000	R410A	3/8	1 PLAIN	735/653/556	0.4	0.71	2.3	430	21/28/38	208-230/60/1	82.9	COMPLETE WITH 2- WAY VALVE THAT IS CONNECTED TO THE CENTRAL CONTROLLER
FCU - B1 - 4	BUILDING - B1 AS SHOWN	ARNU123M2A4 #ZONE 4	1	LG	12,300	13,600	R410A	1/4	1 PLAIN	512/425/337	0.16	0.71	2.3	430	25/34/43	208-230/60/1	82.9	COMPLETE WITH 2-WAY VALVE THAT IS CONNECTED TO CENTRAL CONTROLLER
FCU - B1 - 5	BUILDING - B1 AS SHOWN	ARNU283M2A4 #ZONE 5	1	LG	28,000	31,500	R410A	3/8	1 PLAIN	1250/1017/837	0.16	0.79	2.3	650	60/63/109	208-230/60/1	96.1	COMPLETE WITH 2-WAY VALVE THAT IS CONNECTED TO CENTRAL CONTROLLER
FCU - B1 - 6	BUILDING - B1 AS SHOWN	ARNU123M2A4 #ZONE 6	1	LG	12,300	13,600	R410A	1/4	1 PLAIN	512/425/337	0.16	0.71	2.3	430	25/34/43	208-230/60/1	82.9	COMPLETE WITH 2-WAY VALVE THAT IS CONNECTED TO CENTRAL CONTROLLER
FCU - B1 - 7	BUILDING - B1 AS SHOWN	ARNU483B8A4 #ZONE 7	1	LG	48,100	54,200	R410A	3/8	1 PLAIN	2019/1518/1200	0.35	0.98	5.2	800	482/500/538	208-230/60/1	192	COMPLETE WITH 2-WAY VALVE THAT IS CONNECTED TO CENTRAL CONTROLLER
FCU - B1 - 8	BUILDING - B1 AS SHOWN	ARNU123M2A4 #ZONE 8	1	LG	12,300	13,600	R410A	1/4	1 PLAIN	512/425/337	0.16	0.71	2.3	430	25/34/43	208-230/60/1	82.9	COMPLETE WITH 2-WAY VALVE THAT IS CONNECTED TO CENTRAL CONTROLLER
FCU - B1 - 9	BUILDING - B1 AS SHOWN	ARNU123M2A4 #ZONE 9	1	LG	12,300	13,600	R410A	1/4	1 PLAIN	512/425/337	0.16	0.71	2.3	430	25/34/43	208-230/60/1	82.9	COMPLETE WITH 2-WAY VALVE THAT IS CONNECTED TO CENTRAL CONTROLLER
FCU - B1 - 10	BUILDING - B1 AS SHOWN	ARNU243M2A4 #ZONE 10	1	LG	24,200	27,300	R410A	3/8	1 PLAIN	673/512/425	0.16	0.71	2.3	430	34/43/67	208-230/60/1	82.9	COMPLETE WITH 2-WAY VALVE THAT IS CONNECTED TO CENTRAL CONTROLLER
FCU - B1 - 11	BUILDING - B1 AS SHOWN	ARNU073M2A4 #ZONE 11	1	LG	7,500	8,500	R410A	1/4	1 PLAIN	468/381/294	0.16	0.71	2.3	430	21/29/38	208-230/60/1	82.9	COMPLETE WITH 2-WAY VALVE THAT IS CONNECTED TO CENTRAL CONTROLLER
FCU - B1 - 12	BUILDING - B1 AS SHOWN	ARNU073M2A4 #ZONE 12	1	LG	7,500	8,500	R410A	1/4	1 PLAIN	468/381/294	0.16	0.71	2.3	430	21/29/38	208-230/60/1	82.9	COMPLETE WITH 2-WAY VALVE THAT IS CONNECTED TO CENTRAL CONTROLLER
FCU - B1 - 13	BUILDING - B1 AS SHOWN	ARNU073M2A4 #ZONE 13	1	LG	7,500	8,500	R410A	1/4	1 PLAIN	468/381/294	0.16	0.71	2.3	430	21/29/38	208-230/60/1	82.9	COMPLETE WITH 2-WAY VALVE THAT IS CONNECTED TO CENTRAL CONTROLLER
FCU - B1 - 14	BUILDING - B1 AS SHOWN	ARNU093M2A4 #ZONE 14	1	LG	9,600	10,900	R410A	1/4	1 PLAIN	468/381/294	0.16	0.71	2.3	430	21/29/38	208-230/60/1	82.9	COMPLETE WITH 2-WAY VALVE THAT IS CONNECTED TO CENTRAL CONTROLLER
FCU - B3 - 1	BUILDING - B3 AS SHOWN	ARNU363B8A4 #ZONE 1	1	LG	36,200	40,600	R410A	3/8	1 PLAIN	1730/1317/1066	0.35	0.98	5.2	800	403/420/478	208-230/60/1	192	COMPLETE WITH 2-WAY VALVE THAT IS CONNECTED TO CENTRAL CONTROLLER
FCU - B3 - 2	BUILDING - B3 AS SHOWN	ARNU123M2A4 #ZONE 2	1	LG	12,300	13,600	R410A	1/4	1 PLAIN	512/425/337	0.16	0.71	2.3	430	25/34/43	208-230/60/1	82.9	COMPLETE WITH 2-WAY VALVE THAT IS CONNECTED TO CENTRAL CONTROLLER
FCU - B3 - 3	BUILDING - B3 AS SHOWN	ARNU073M2A4 #ZONE 3	1	LG	7,500	8,500	R410A	1/4	1 PLAIN	468/381/294	0.16	0.71	2.3	430	21/29/38	208-230/60/1	82.9	COMPLETE WITH 2-WAY VALVE THAT IS CONNECTED TO CENTRAL CONTROLLER

NOTE: FOR ALL HANGING EQUIPMENT INSIDE BUILDING TO BE SEISMICALLY BRACED - WITHIN CEILING SPACE OR HANGING FROM JOISTS.



No.	Issued For	Date
02	ISSUED FOR ADDENDUM	09-10-2025
01	ISSUED FOR PERMIT #1	07-02-2025



Development File Number
D 00-000

alaimo architecture inc

202-8551 Weston Road
Woodbridge, ON L4L 9R4
P: (905) 856-2840
F: (905) 856-4912
info@alaimoarchitecture.com

Drawing Title

MECHANICAL SCHEDULES

Project

TOWN OF ORANGEVILLE
FIRE STATION PROJECT

10 COMMERCE ROAD,
ORANGEVILLE, ONTARIO

N.T.S
MG
2341A-23
2024-05-10

HOOD SCHEDULE																					
TAG	LOCATION	MANUFACTURER	QTY.	FAN UNIT MODEL #	LENGTH	MAX COOKING TEMP.	TYPE	APPLIANCE DUTY	DESIGN CFM/FT	TOTAL EXH CFM	EXHAUST PLENUM							HOOD CONSUMPTION	HOOD CONFIGURATION		REMARKS
											RISERS								END TO END	ROW	
											WIDTH	LENGTH	HEIGHT	DIA	CFM	VEL	SP				
HOOD	AS SHOWN	AQUAMATIC	1	4824 AM-ND-2	7' 0"	600 DEG	1	HEAVY	250	1750	13"	14"	4"	-	1750	1385	-0.305"	400 SS WHERE EXPOSED	ALONE	ALONE	

TRANSFER DUCTG SCHEDULE							
SYMBOL	MODEL	MANUFACTURER	CLA-A- STANDARD RANGE (MM)	LENGTH (MM)	WORKING RANGE (M3/S)	ATTENUATION dB (A)	REMARKS
INSULATED TRANSFER DUCT	CLA-A 125-500	SWEGON	100-400	500–1000	0-2	5-25	EXTREMELY LOW INSTALLATION HEIGHT. BUILT FOR A LOW CO2 FOOTPRINT "EPD". Fire-resistance class E30 to E120.

HEAT RECOVERY UNIT SCHEDULE								
TAG	QUANTITY	TYPE	MANUFACTURER	MODEL	CAPACITY	ELECTRICAL	WEIGHT IBS	REMARKS
					SUPPLY CFM	VOLTAGE		
ERV-1	AS SHOWN	ENERGY RECOVERY VENTILATOR	LG	ARVU0532EA2	388	230V / 60HZ / 1PH	148	-

BRANCH CONTROLLER SCHEDULE								
SYMBOL	ITEM	LOCATION	QTY.	MANUFACTURER	MODEL	BRANCHES	V/PH/Hz	REMARKS
BC-1	BRANCH CONTROLLER	AS SHOWN	4	LG	PRHR063A	6	208/1/60	-
BC-2	BRANCH CONTROLLER	AS SHOWN	1	LG	PRHR033A	3	208/1/60	-

ELECTRIC HEATERS SCHEDULE								
SYMBOL	QTY.	LOCATION	MANUFACTURE	MODEL	WATT	VOLTAGE / PH	CONTROL	REMARKS
BBH-1	4	AS SHOWN	QUELLET ELECTRIC HEATING	OCB1002	1000	120V / 1 - PH	IN BUILT THERMOSTAT	-

DIFFUSER AND GRILL SCHEDULE						
SYMBOL	MODEL	SUPPLY/RETURN/EXHAUST	CFM	SIZE	DAMPER	REMARKS
D	EH PRICE - SPD - SQUARE PLAQUE DIFFUSER	S	AS NOTED ON PLAN	AS NOTED ON PLAN	Y	SPD DIFFUSERS ARE PRIMARILY 24" BY 24".
S	EH PRICE - SDS - LINEAR SLOT DIFFUSER	S	AS NOTED ON PLAN	AS NOTED ON PLAN	Y	REFER TO PLAN VIEW DRAWINGS FOR SPECIFIC SIZE AND CFM FOR A PARTICULAR SLOT DIFFUSER
S2	PRICE - LINEAR BAR GRILLE - SIDE LBP	S	AS NOTED ON PLAN	AS NOTED ON PLAN	Y	REFER TO PLAN VIEW DRAWINGS FOR SPECIFIC SIZE AND CFM FOR A PARTICULAR SLOT DIFFUSER
R1	EH PRICE - 80 SR-EGG CRATE GRILLE RETURN (NON DUCTED)	R	AS NOTED ON PLAN	AS NOTED ON PLAN	Y	EGG CRATE RETURN GRILLES SHALL ONLY BE UTILIZED IN BACK OF HOUSE STORAGE ROOMS ETC. AS SHOWN
R2	EH PRICE - LBP SQUARE GRILLE RETURN (DUCTED)	R	AS NOTED ON PLAN	AS NOTED ON PLAN	Y	REFER TO PLAN VIEW DRAWINGS FOR LOCATON, SIZE AND CFM FOR SQUARE RETURN GRILLE.
R3	EH PRICE - LBP LINEAR BAR GRILLE RETURN (DUCTED)	R	AS NOTED ON PLAN	AS NOTED ON PLAN	Y	LBP BAR GRILLES SHALL BE UTILIZED IN FINISHED SPACES

EXHAUST FAN SCHEDULE										
TAG	QTY.	ROOM	MANUFACTURER	MODEL	AIR FLOW (CFM)	S.P. (°WC)	V/PH/Hz	AMPS (FLA)	POWER (HP)	REMARKS
EF-1	-	AS SHOWN	PRICE	XB50	50	50	120/1/60	0.3		c/w Ø150 DUCT, C/W WALL BOX, GRAVITY BACK-DRAFT DAMPER AND BIRD SCREEN
EF-2	-	AS SHOWN	GREENHECK	AER-20-03-0610-VG	150	0.25	120/1/60	1.5	1/4	-
EF-3	-	ROOF	CAPTIVE AIR	DU10H	1500	-	115/1/60	1.1	-	SUPPLIED AS PART OF THE COMMERCIAL KITCHEN EXHAUST. MOUNTED DIRECTLY ABOVE KITCHEN HOOD. INTERLOCK WITH MUA-3

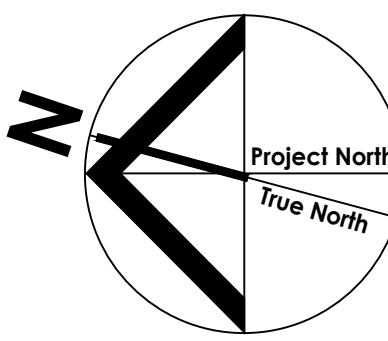
FAN SCHEDULE							
TAG	TYPE	MANUFACTURER	CAPACITY CFM	ESP IN WC	FAN SPEED RPM	ELECTRICAL	REMARK
EF-4	WALL MOUNTED FAN	GREENHECK	5775	0.3	TBD	120/1/60	WALL MOUNTED FAN TO PROVIDE FRESH AIR AND EXHAUST FOR EQUIPMENT BAY. INTERLOCKED WITH CO DETECTOR. INTERLOCK WITH AIR INTAKE DAMPERS
EF-5	HOSE TOWER EXHAUST FAN	GREENHECK	750	0.20	1142	120/1/60	SPUN ALUMINUM MOTOR COVER & FAN SHROUD, DOWN DISCHARGE, W/BELT DRIVE CENTRIFUGAL BACKWARD INCLINED FAN, GALV BIRD SCREEN, 24" HIGH INSULATED ROOF CURB, & BACKDRAFT DAMPER

TUBE HEATERS SCHEDULE									
SYMBOL	QTY.	LOCATION	MANUFACTURE	MODEL	BTUH INPUT RANGE BTU/HR	LENGTHS FT	FUEL	RADIANT TUBES	REMARKS
TBH-1	4	AS SHOWN	SHWANK	SST EXTREME HEATERS	150,000	80 FT	NATURAL GAS	ALUMINIZED STEEL	4 LOCATED IN THE MAIN EQUIPMENT BAY
TBH-2	1	AS SHOWN	SHWANK	SST EXTREME HEATERS	100,000	24 FT	NATURAL GAS	ALUMINIZED STEEL	1 LOCATED IN THE WASHDOWN AREA IN BUILDING "D"

FAN SCHEDULE						
SYMBOL	MODEL	CFM	DIMESNIONS	ELECTRICAL		REMARKS
				VOLTAGE	AMPS	
DE-1, DE-2, DE-3, DE-4, DE-5, DE-6	AMB302-NDR (220V)	3000	(H) 24" X (W) 24" X (D) 66"	208 / 1 / 60	7.6 (220V)	260 (114) AIRMATION INDUSTRIAL AIR CLEANER. INSTALL PER MANUFACTURER'S INSTRUCTIONS. REFER TO E DRAWINGS FOR LOCATION OF CONTROL PANEL AND ASSOCIATED WIRING

MULTI HR BOXES SCHEDULE							
TAG	MODEL NAME	LOCATION	QTY.	POWER SUPPLY			
				VOTLS	PHASE	HZ	RLA
HRU1	PRHR083A	BUILDING A	1	208 / 230V	1Ph	60Hz	0.2
HRU1	PRHR063A	BUILDING B1	2	208 / 230V	1Ph	60HZ	0.2
HRU1	PRHR033A	BUILDING B3	1	208 / 230V	1Ph	60HZ	0.15

The Design, including, but not limited to: Spatial Relationships, Orientation & General configuration of the project are the Copyright of the Architect.
Do Not Scale The Drawings.
All Drawings, Specifications And Related Documents Are The Copyright Of The Architect And Must Be Returned Upon Request.
Reproduction Of Drawings, Specifications And Related Documents In Part Or Whole Is Forbidden Without The Architects Written Permission.
This Drawing Is Not To Be Used For Construction Until Signed By The Architect.



No.	Issued For	Date
02	ISSUED FOR ADDENDUM	09-10-2025
01	ISSUED FOR PERMIT #1	07-02-2025



Development File Number
D 00-000

alaimo architecture inc.

202-8551 Weston Road
Woodbridge, ON L4L 9R4
P: (905) 856-2840
F: (905) 856-4912
info@alaimoarchitecture.com

Drawing Title

MECHANICAL SCHEDULES

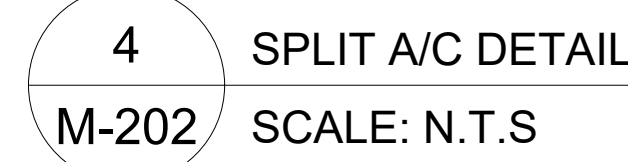
Project

TOWN OF ORANGEVILLE
FIRE STATION PROJECT

10 COMMERCE ROAD,
ORANGEVILLE, ONTARIO

Scale
N.T.S
Issued by
MG
File No.
2341A-23
Plot Date
2024-05-10

NOTE: FOR ALL HANGING EQUIPMENT INSIDE BUILDING TO BE SEISMICALLY BRACED - WITHIN CEILING SPACE OR HANGING FROM JOISTS.



No.	Issued For	Date
02	ISSUED FOR ADDENDUM	09-10-2025
01	ISSUED FOR PERMIT #1	07-02-2025



Development File Number
D 00-000

alaimo architecture inc.

202-8551 Weston Road
Woodbridge, ON L4L 9R4
P: (905) 856-2840
F: (905) 856-4912
info@alaimoarchitecture.com

Drawing Title

MECHANICAL SCHEMATICS

Project

TOWN OF ORANGEVILLE
FIRE STATION PROJECT

10 COMMERCE ROAD,
ORANGEVILLE, ONTARIO

N.T.S	Scale
MG	Issued by
2341A-23	File No
2024-05-10	Plot Date